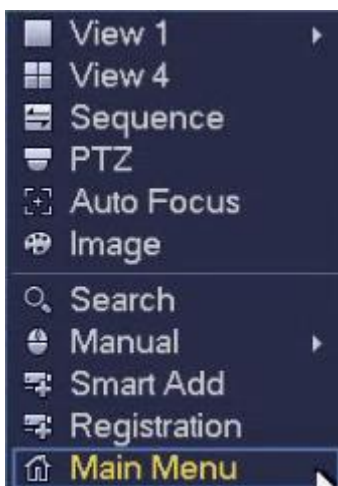
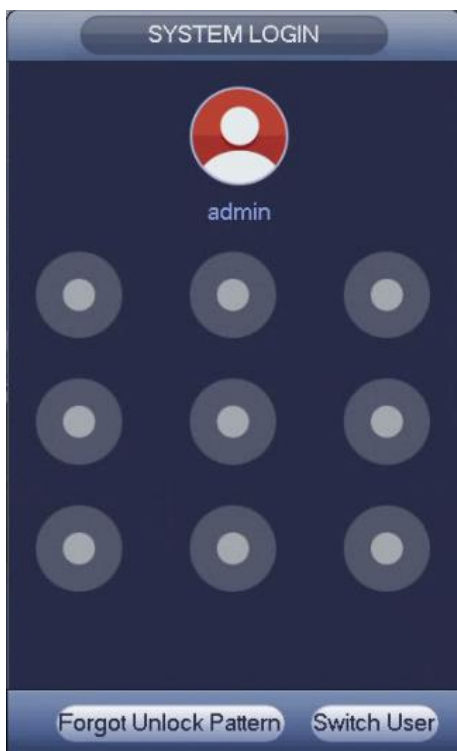


Logging In To The NVR:

1. To log in to the NVR, use a USB mouse and right click anywhere on the screen and select 'Main Menu'.



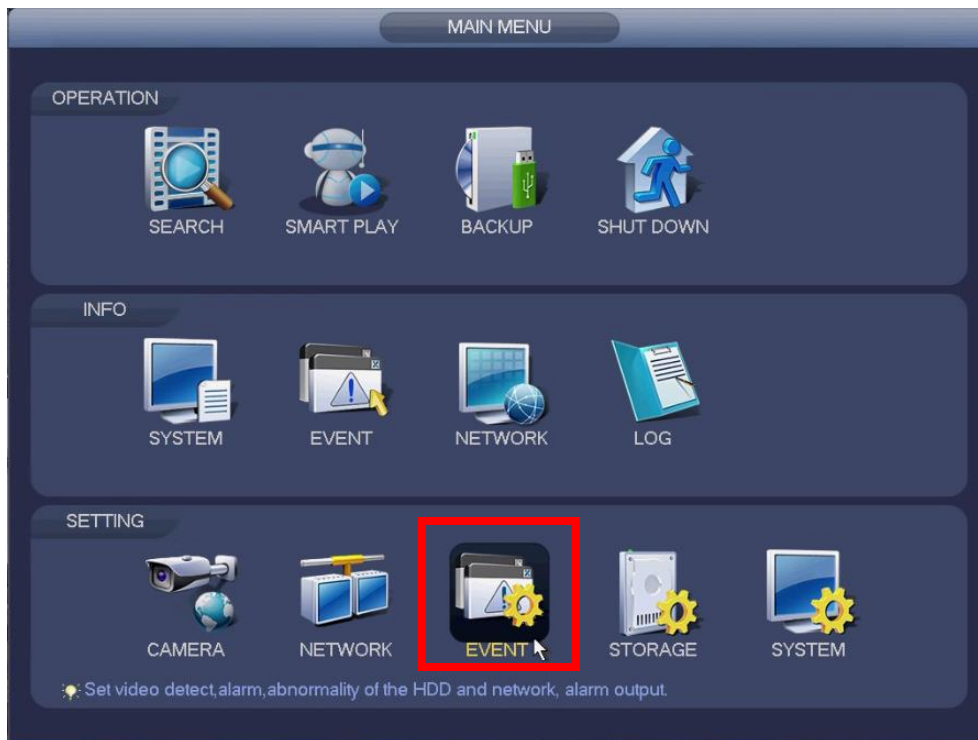
2. Log in to the unit with either your unlock pattern (if configured) or password.



3. The NVR Main Menu will now be displayed.

Enabling Motion Detect On Cameras:

1. To enable motion recording on the NVR, both the recording schedule and the camera motion detect need to be configured. To enable the camera motion detect, log in to the 'Main Menu' as per normal and select the 'Event' icon under the 'Setting' menu.



2. Make sure the 'Enable' box is ticked and applied for each channel (D1, D2, etc) to enable motion recording per camera.



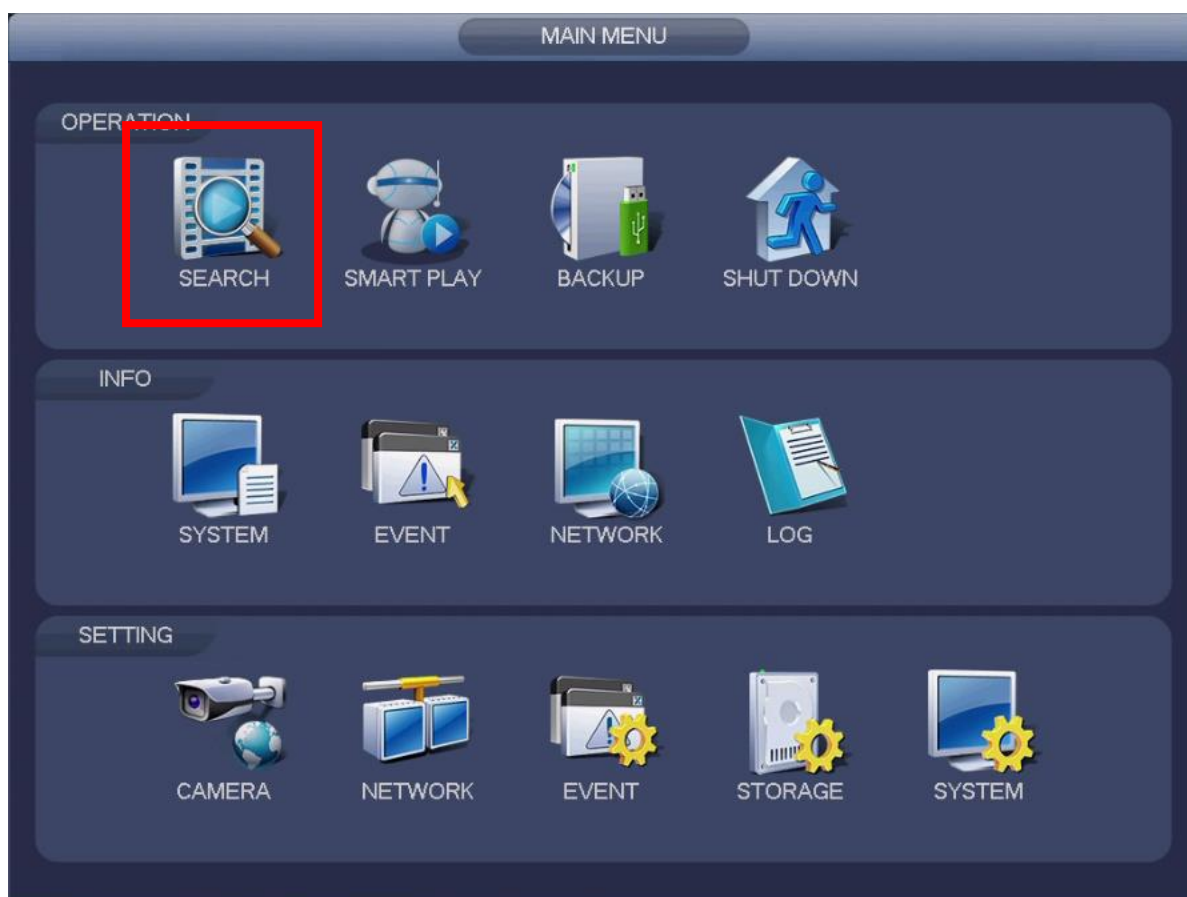
3. The recording schedule would have been configured in the 'Start-up Wizard'.

Reviewing Captured Footage:

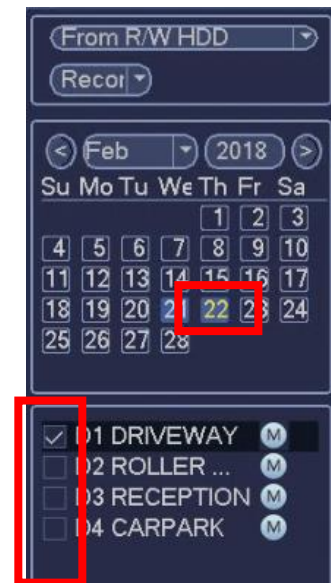
1. To review captured footage, you first need to log in to the NVR as a valid user. Use a USB mouse and right click anywhere on the screen and select 'Main Menu' and log in to the unit with either your unlock pattern (if configured) or password.



2. In the Main Menu, select the top left 'Search' icon to launch in to 'Playback' mode.



3. On the right-hand side, select the date you wish to review the footage.
4. Tick the box of the camera you want to view from the list underneath. This will display the camera timeline down the very bottom of the screen.
5. Use the playback controls to review footage as required. The timeline sizer down the bottom right of the screen can be used to zoom in on the timeline for a more accurate review.
6. Depending on how the system is configured, the green lines indicate constant recording, while the yellow lines indicate where a motion event has occurred.



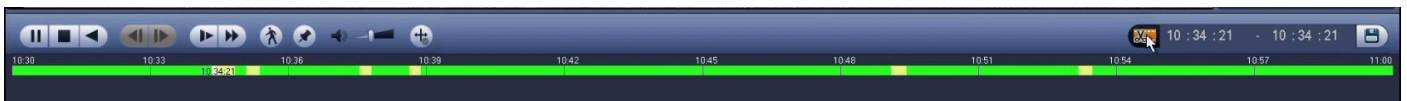
7. To review a different date or camera first press the 'Stop' icon on the current video. Then select the new date/camera that you wish to review the footage from.

Backing Up Captured Footage To USB:

1. Insert the USB drive that you wish to backup the recorded camera footage into the NVR. Right click to cancel the pop-up menu. It is recommended to use a new USB device that is dedicated for the storage of CCTV footage.



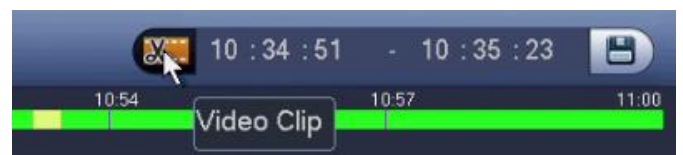
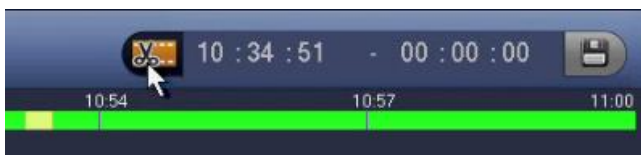
2. Enter in to 'Playback' mode as previously described to review and locate the footage you want to backup.



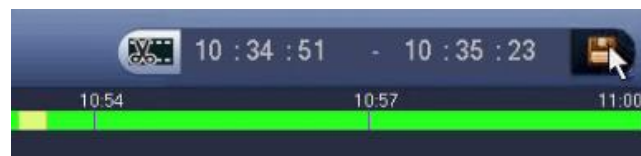
3. Use the playback controls to find the start of the event that you want to backup.



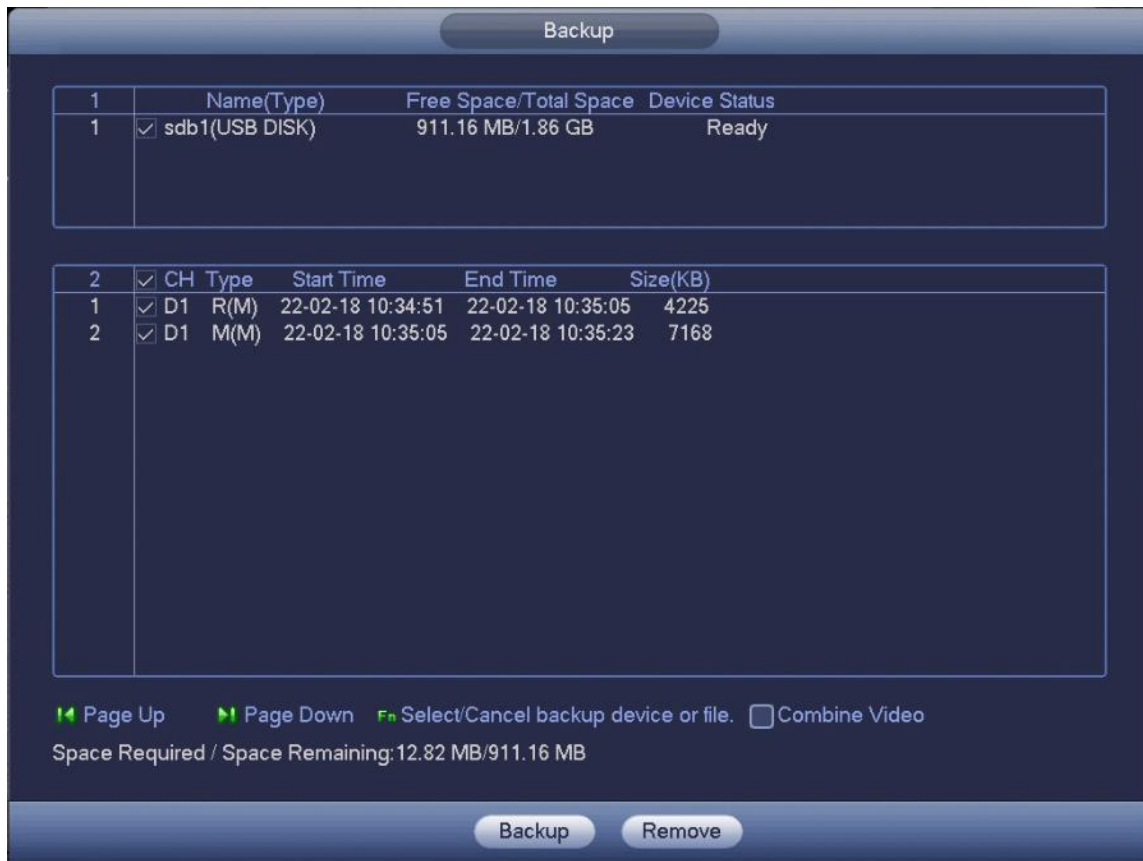
4. Select the 'Clip' button to cut the start of the event. Watch through footage until the end of the event and then select the 'Clip' button again to complete the selection.



5. Select the 'Save' icon to launch in to the 'Backup' page.

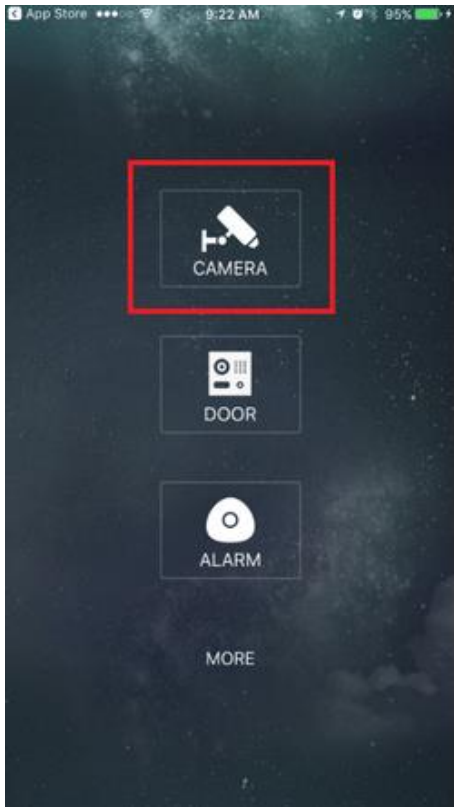


- The 'Backup' screen will show with a list of recorded files from the clip previously select. Press the 'Backup' button to export the files to the USB drive.



Mobile App Configuration:

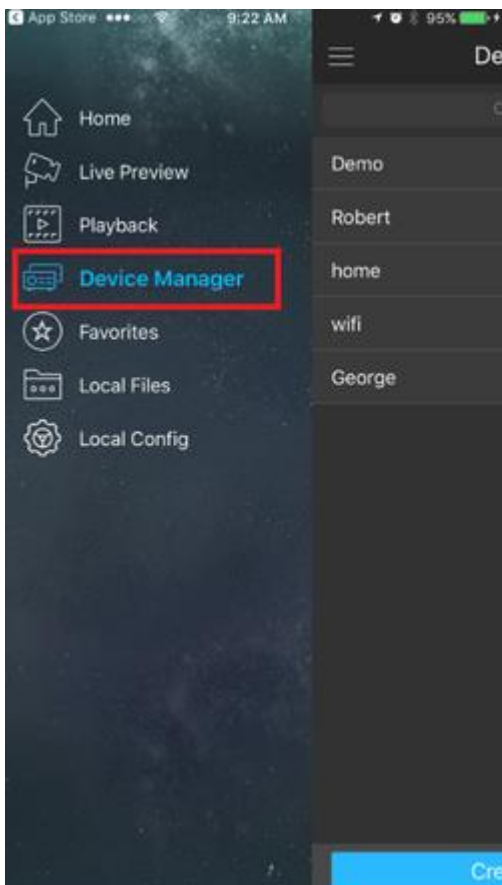
1. From the home screen of the mobile application select "Camera".



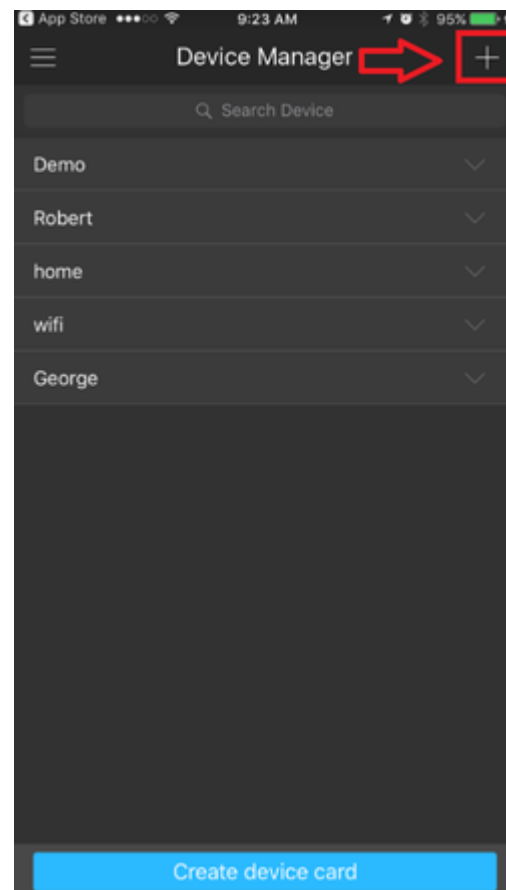
2. Select the menu button.



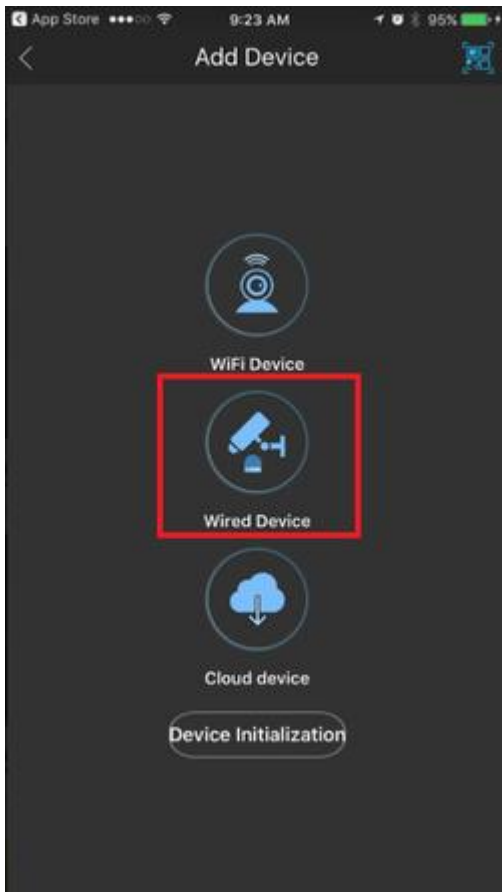
3. Select Device Manager.



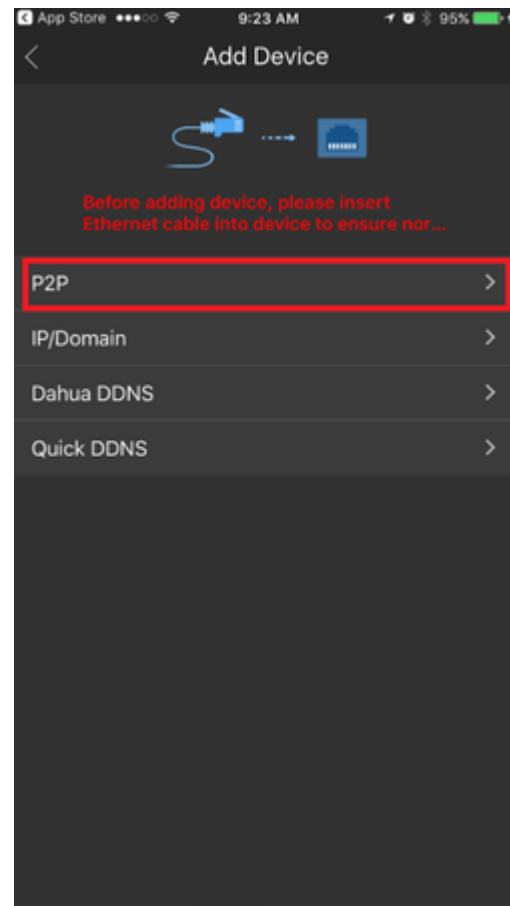
4. Select add button to add device.



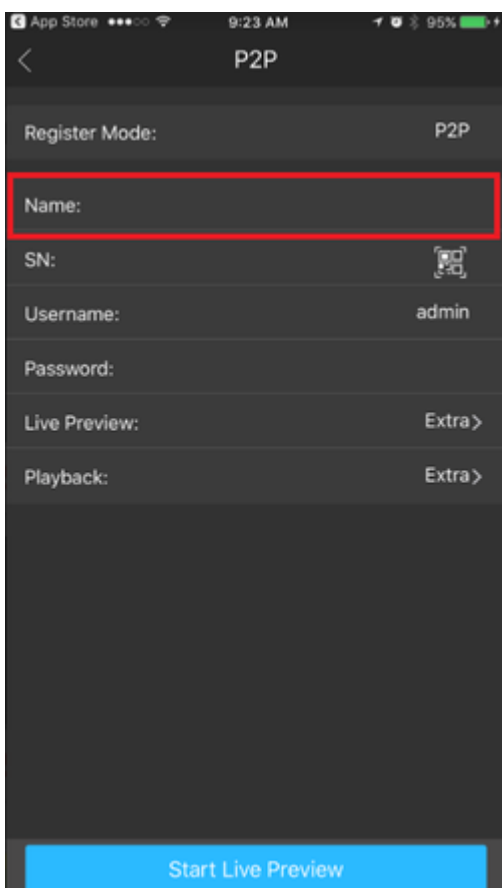
5. Select Wired Device.



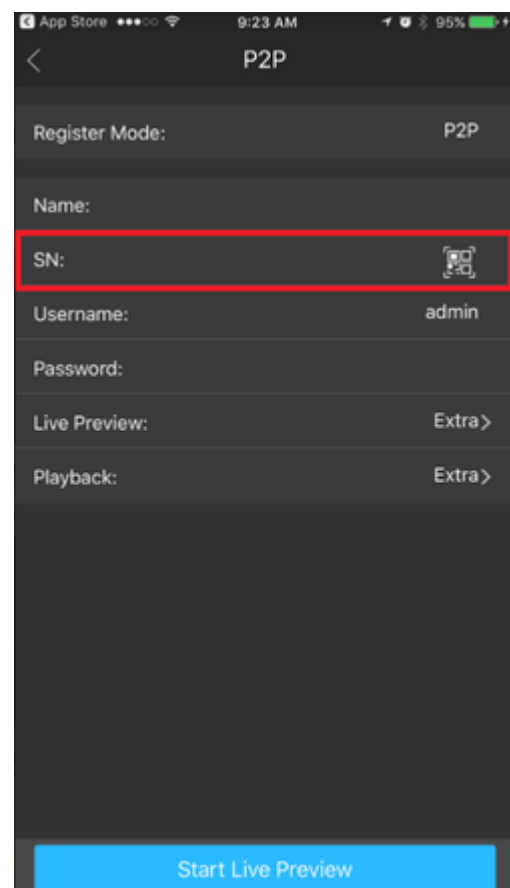
6. Select P2P.



7. Name your device



8. Tap the QR code to bring up QR code scanner.



9. With your mobile device in hand go to your NVR, navigate to the P2P/Easy4IP settings and scan QR code to the right-hand side. You will also see the SN (Serial Number) of the recorder underneath the QR code, you may use that to manually type in the SN into the SN field of the IDMSS/GDMSS mobile app. **Note:** you must have P2P/Easy4IP "enabled" from the local recorder with a status that either shows "online" or "connect success".



10. Input the username -> password (as configured during the 'Start-up Wizard') -> and select live preview. By selecting "Start live preview" the device settings will be automatically saved into the application.

